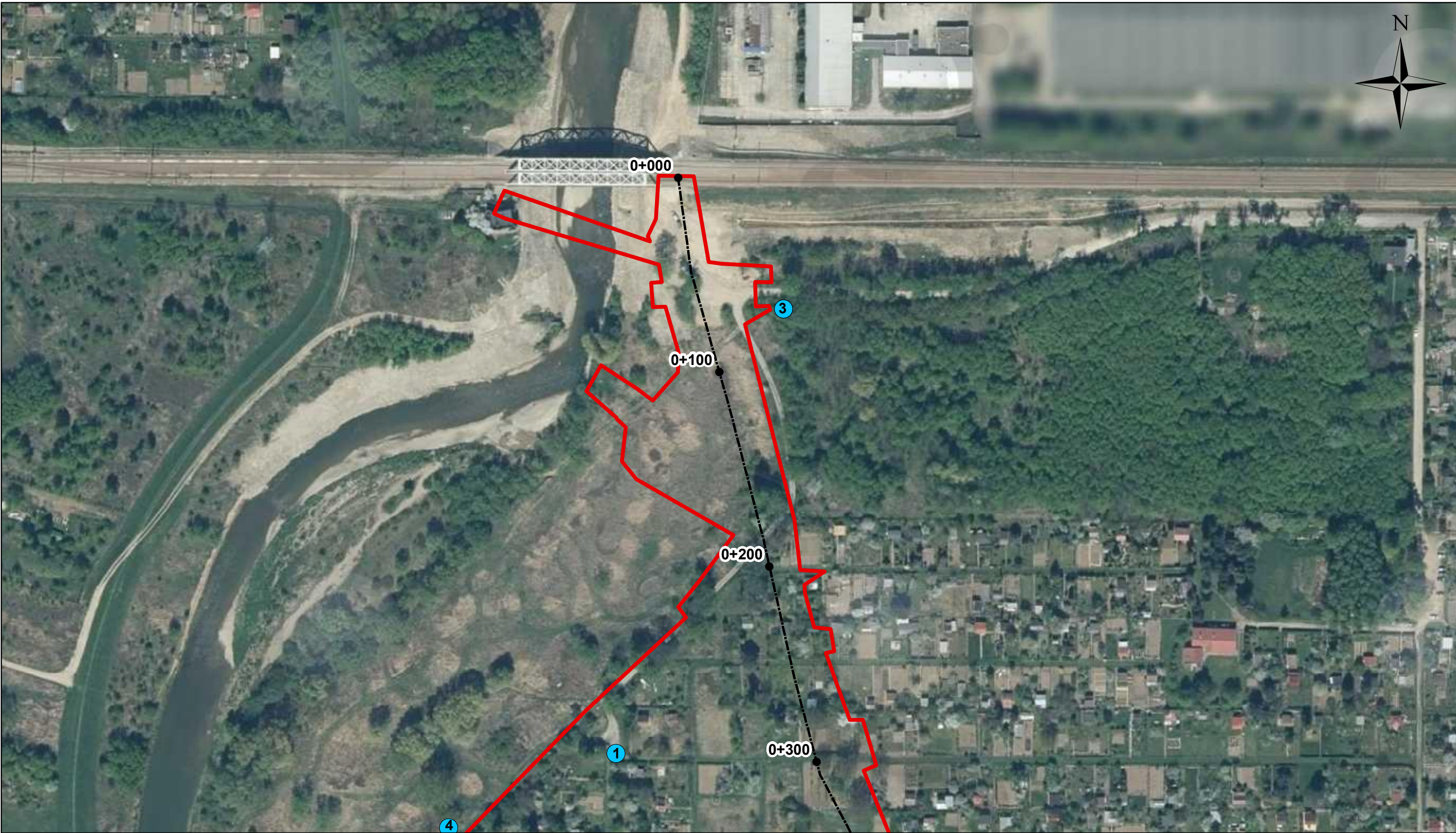


Appendix no. 9: Map with location of environmental habitats and fauna occurrence sites in the Contract area

INDEX OF SHEETS







**Legend**

- Embankment chainage
- Axis of the embankment
- Designed range of the Contract

Fauna occurrence sites  
class, number, species

- birds, 1, Barn swallow
- birds, 2, Great tit
- birds, 3, Feral pigeon
- birds, 4, Fieldfare
- birds, 5, Eurasian jay
- birds, 6, Eurasian magpie

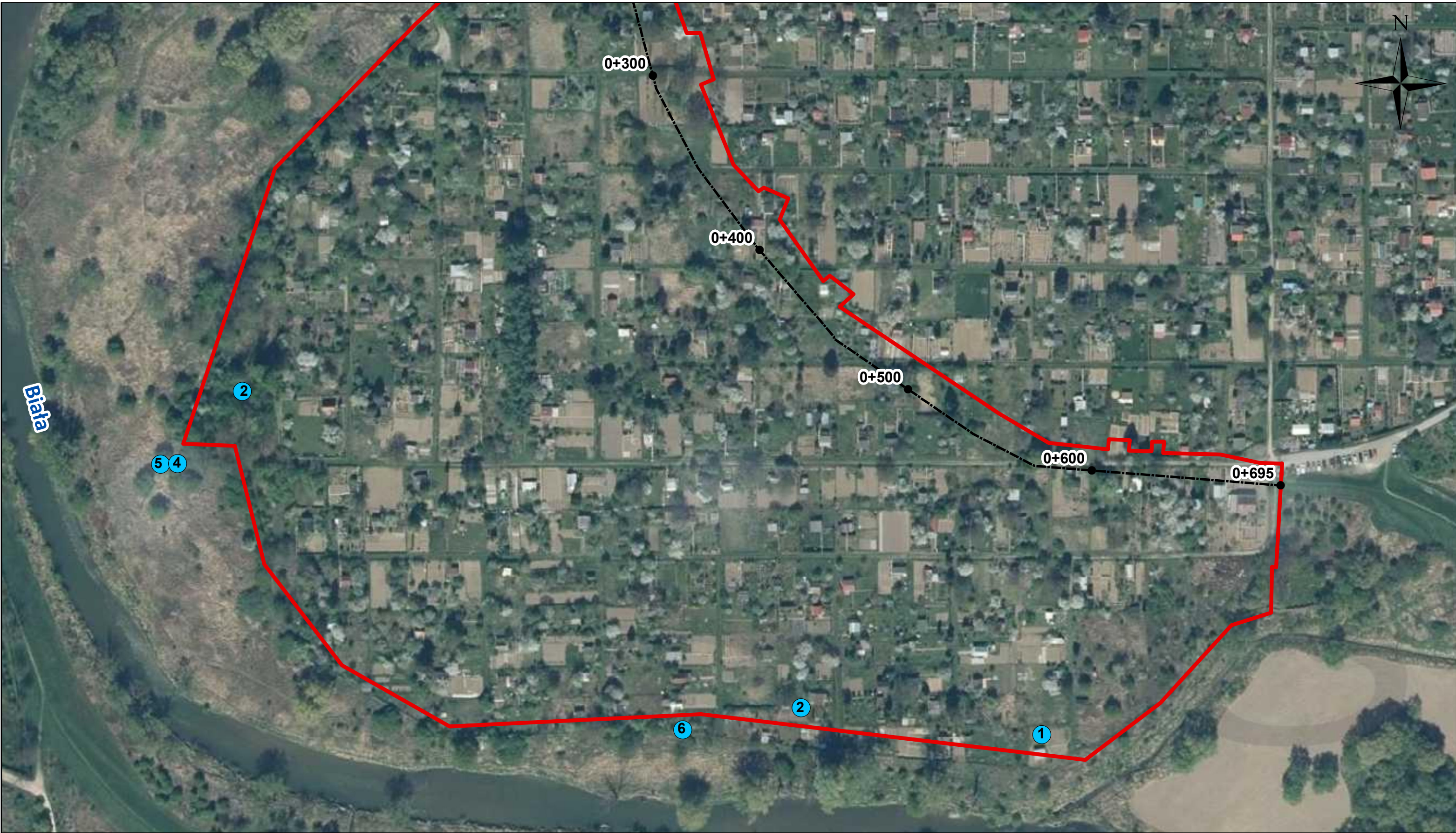
**Appendix no. 9: Map with location of environmental habitats and fauna occurrence sites in the Contract area**

**SHEET 1**

**3D.2/1 Construction of the right embankment of the Biala River in the City of Tarnów**







● Embankment chainage

----- Axis of the embankment

— Designed range of the Contract

Fauna occurrence sites

class, number, species

● birds, 1, Barn swallow

● birds, 2, Great tit

● birds, 3, Feral pigeon

● birds, 4, Fieldfare

● birds, 5, Eurasian jay

● birds, 6, Eurasian magpie

0,055 0,0275 0 0,055 0,11 0,165 0,22

km

SHEET 2

3D.2/1 Construction of the right embankment of the Biala River in the City of Tarnów